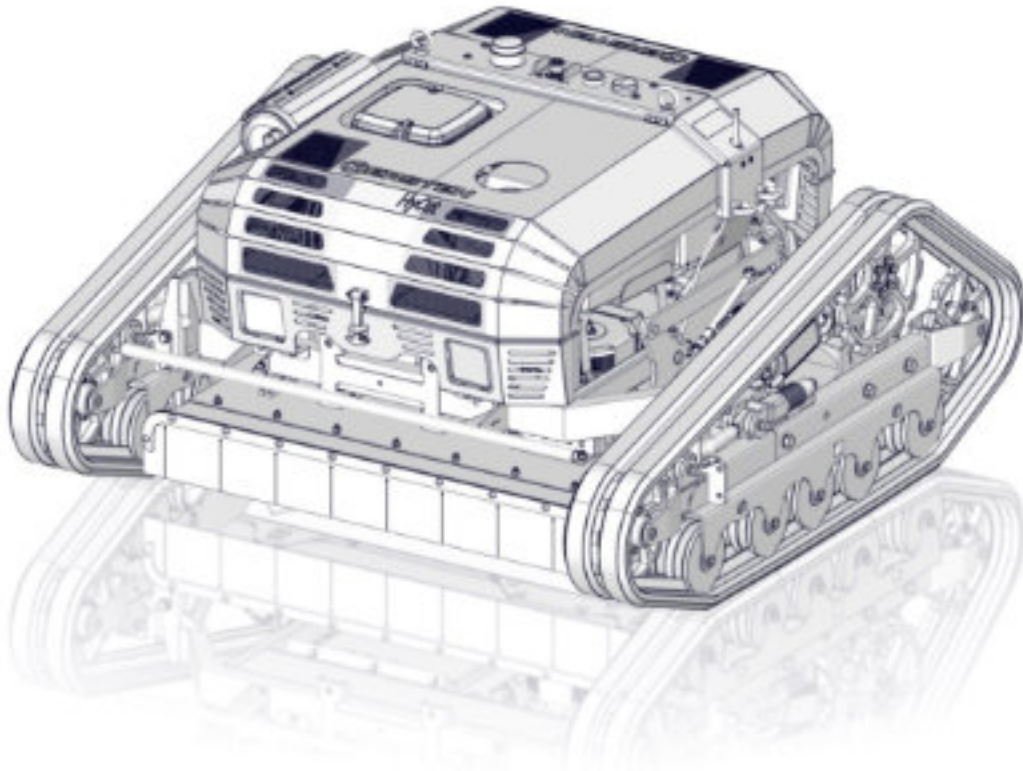




## Spare part list

### Mower HyCut



Order number: E00140

from machine no.:

Rev: R01

Status: 09.09.2021

**Kersten**  
SITE MAINTENANCE EQUIPMENT

Telephone: 0118 9869 253

Email: [office@kerstenuk.com](mailto:office@kerstenuk.com)

Progress House, 39 Boulton Road, Reading, Berkshire, RG2 0NH, United Kingdom

<https://kerstenuk.com/>

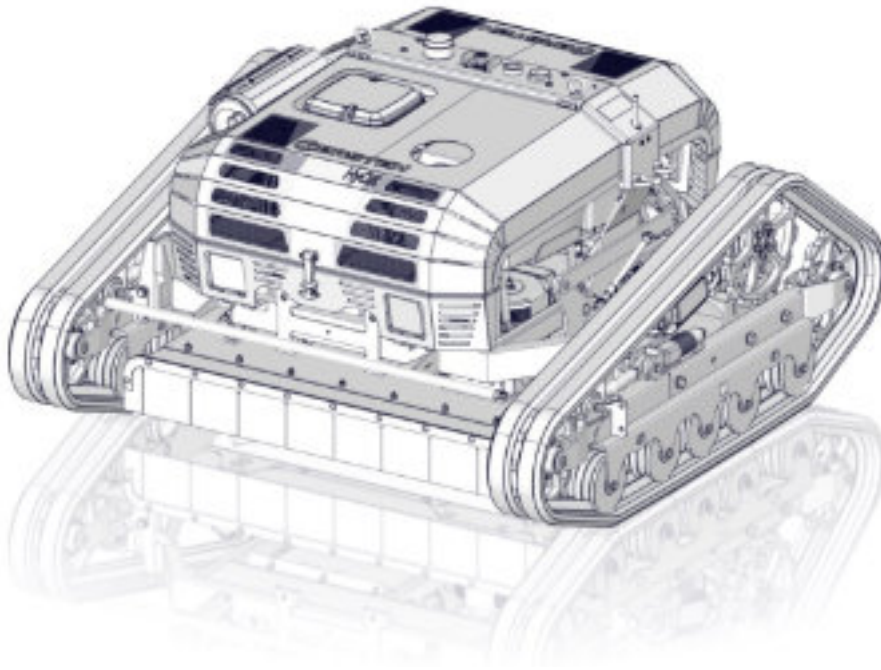
# Table of contents

---

## table of contents

<b>1</b>	<b>MODEL OVERVIEW</b> .....	<b>2</b>
1.1	HYCsubtitlesS1000 .....	2
<b>2</b>	<b>ASSEMBLY OVERVIEW</b> .....	<b>3</b>
2.1	CHATE- ZASSEMBLY- C11304 .....	3
2.2	ADRIVE UNITHYCsubtitles- ZASSEMBLY- C10521 .....	10
2.3	HAUBEHYCsubtitles- ZASSEMBLY- C10957.....	12
2.4	FAHRWERK- ZASSEMBLY.....	14
2.4.1	FTRANSMISSION LEFTHYCsubtitles- ZASSEMBLY- C11207.....	15
2.4.2	FRIGHT MOVEMENTHYCsubtitles- ZASSEMBLY- C11586 .....	16
2.5	MAH DECK- ZASSEMBLY- C10165 .....	17
2.6	PENDLESS KNIFE PLATE- ZASSEMBLY- C11840 .....	19
2.7	GUMMIC CHAIN SET.....	20
2.7.1	ALL ROUND-PROFILE- S1001 .....	20
2.7.2	ACKERSTOLLE- S1002 .....	20
<b>3</b>	<b>OPTION</b> .....	<b>21</b>
3.1	WAGENCY JACK- S1004.....	21

## 1 Model overview

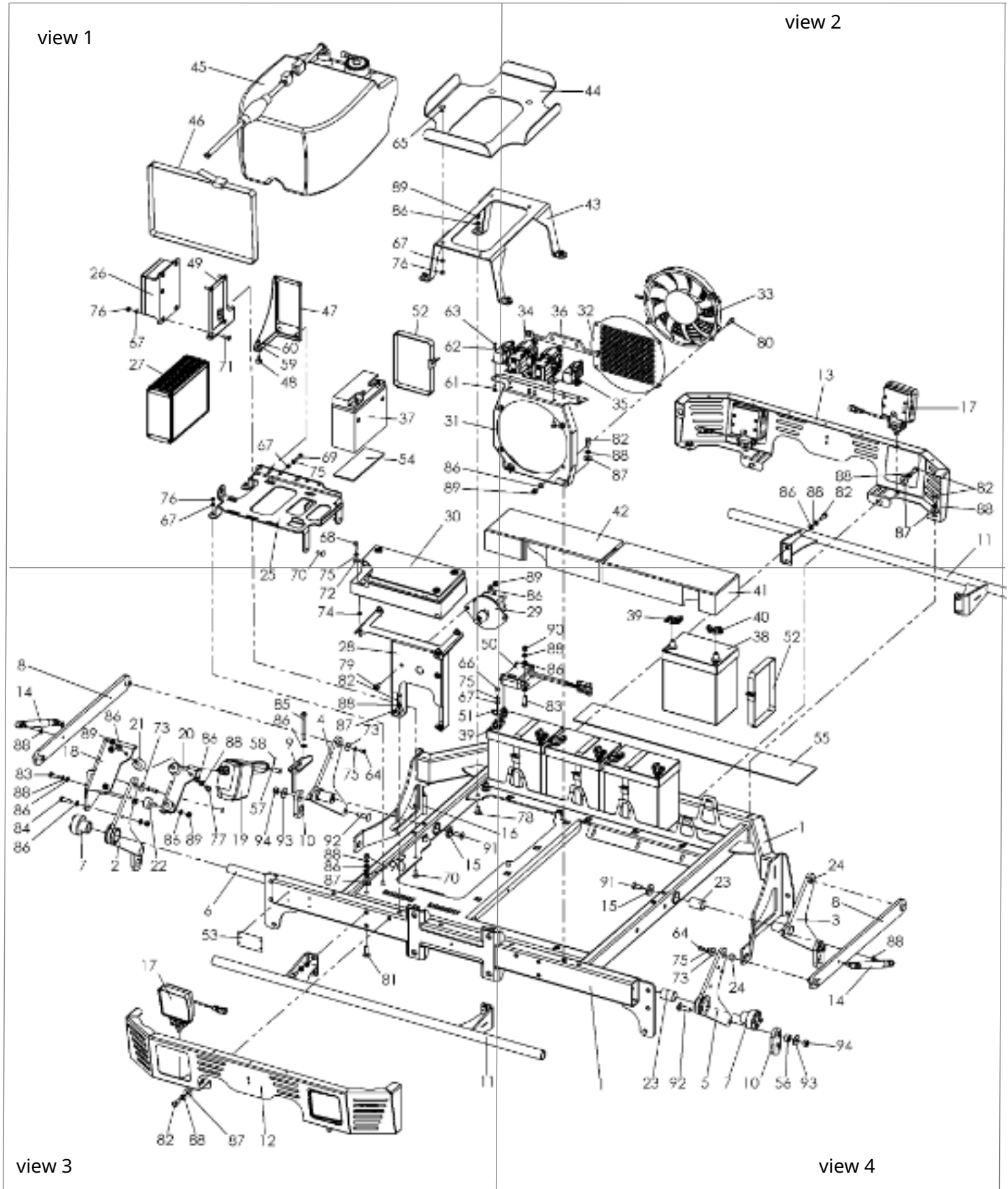


### 1.1 HyCut S1000

No.	Item No.	no.	naming 1
1	C11304	1	chassis assembly
2	C10521	1	Drive unit assembly
3	C10957	1	hood assembly
4	C11207	1	Landing gear left, assembly
5	C12120	1	Landing gear on the right, assembly
6	C10165	1	Mower deck assembly
7	C11840	1	Pendulum knife disc assembly

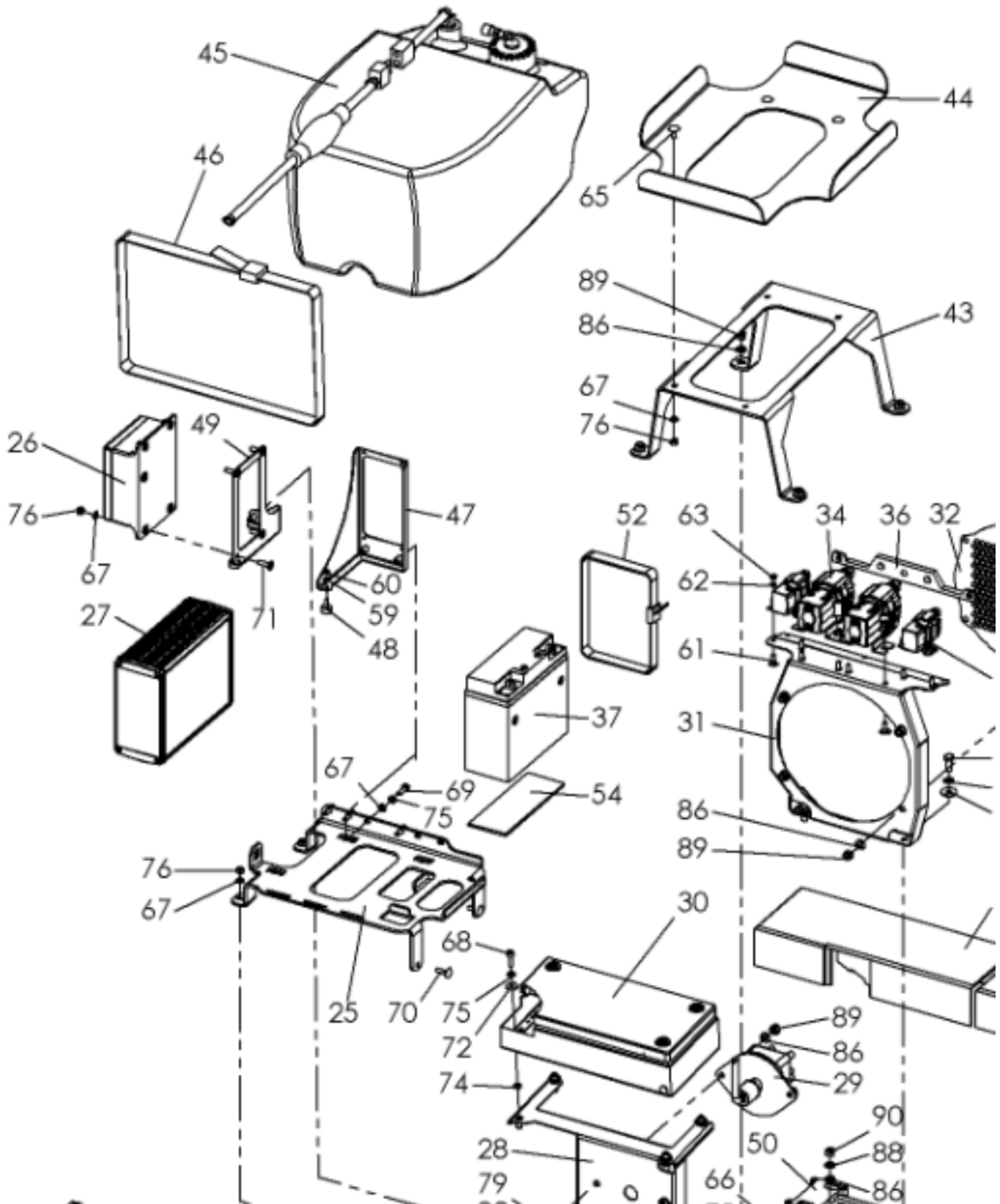
## 2 Assembly overview

### 2.1 Chassis - Reassembly - C11304



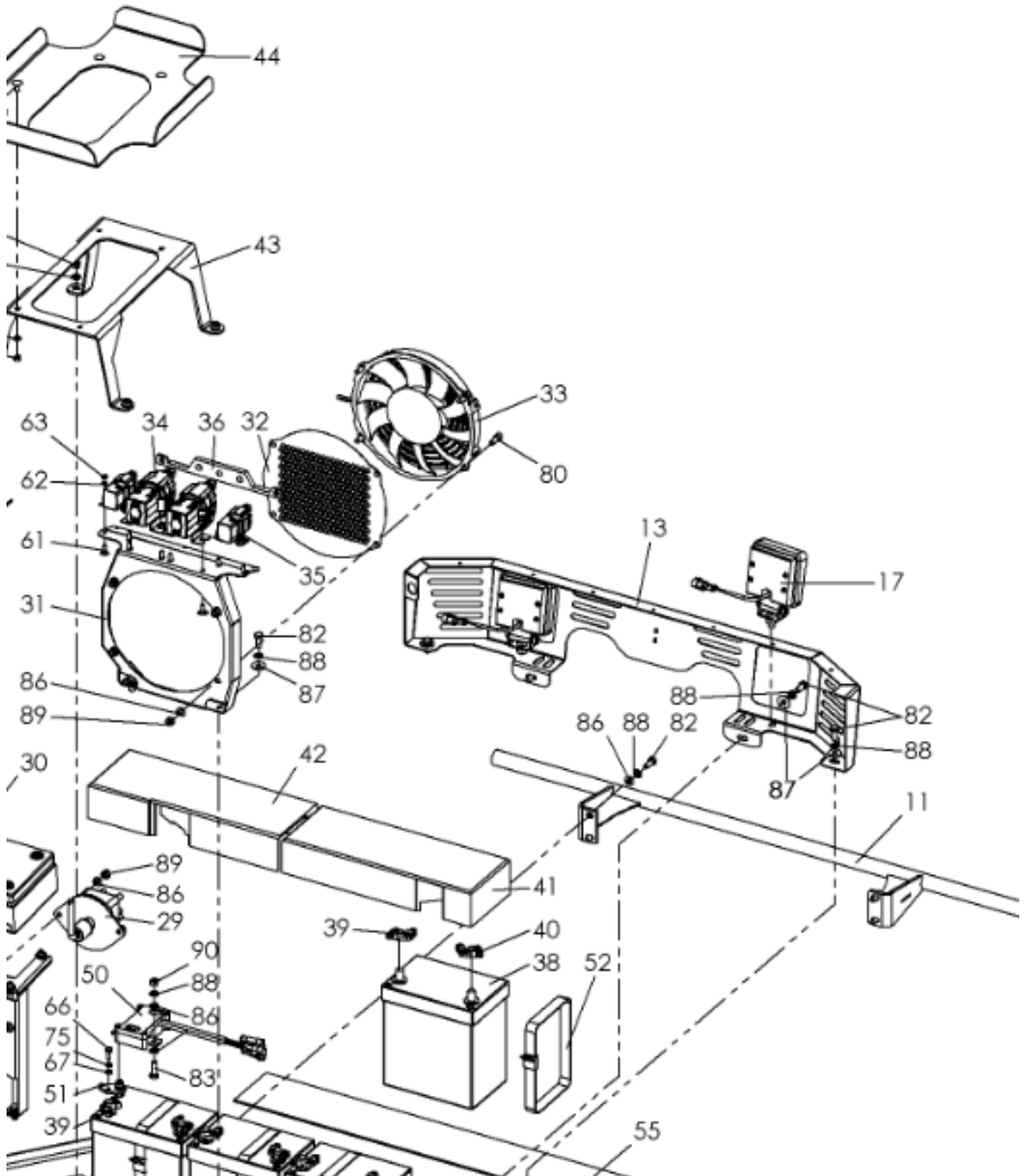
Chassis - assembly - C11304

view 1



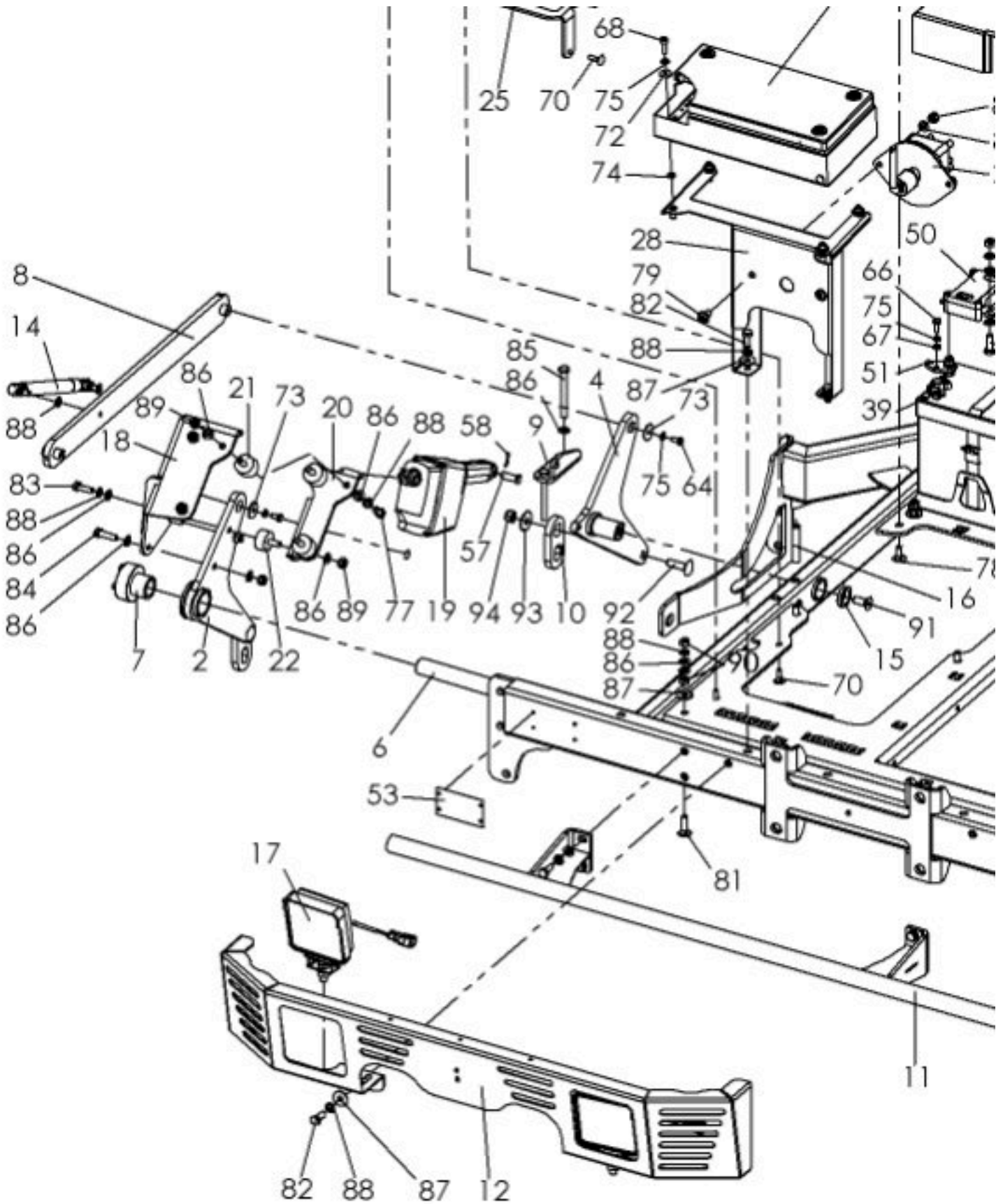
Chassis - assembly - C11304

view 2



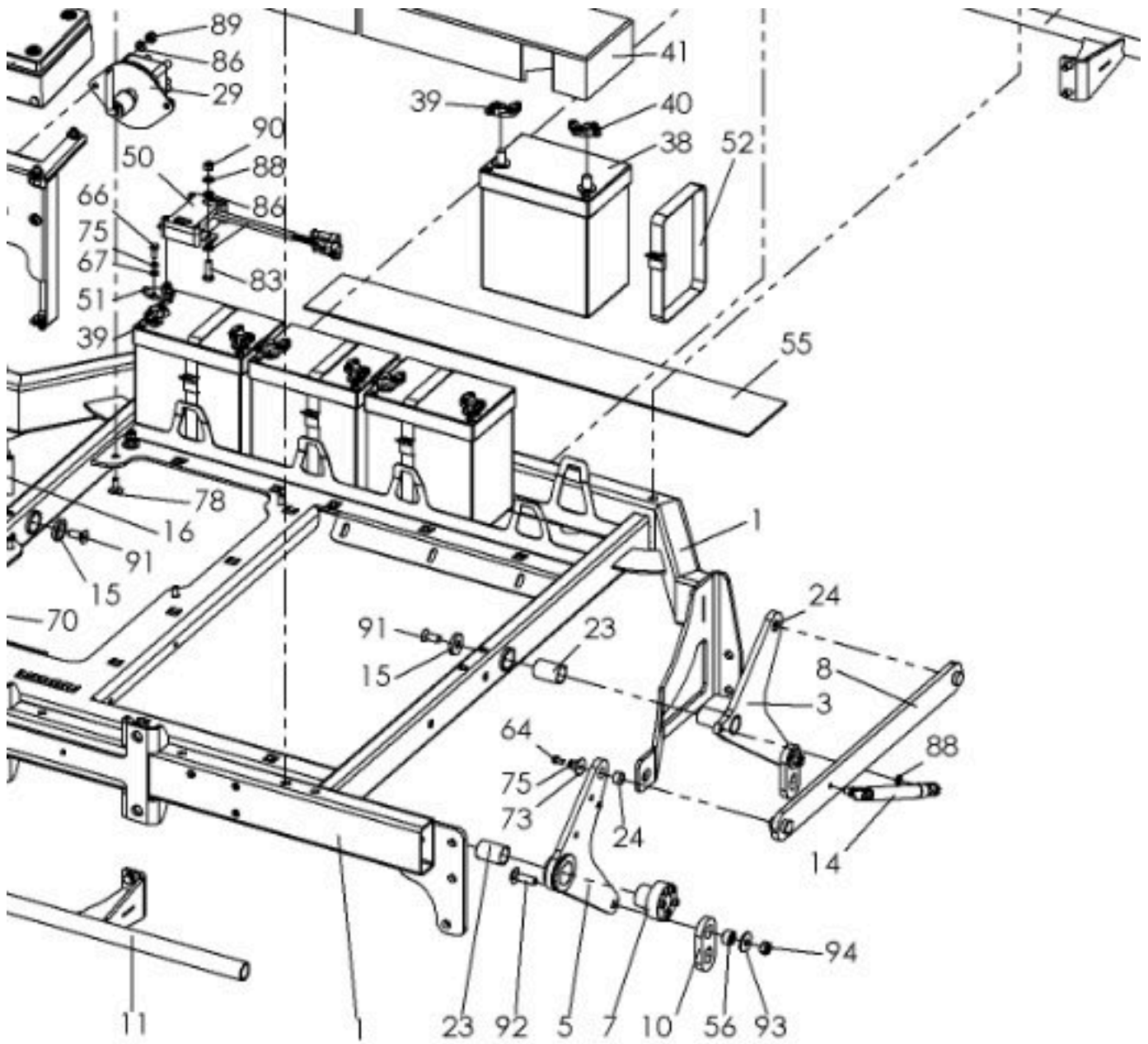
Chassis - assembly - C11304

view 3



Chassis - assembly - C11304

view 4





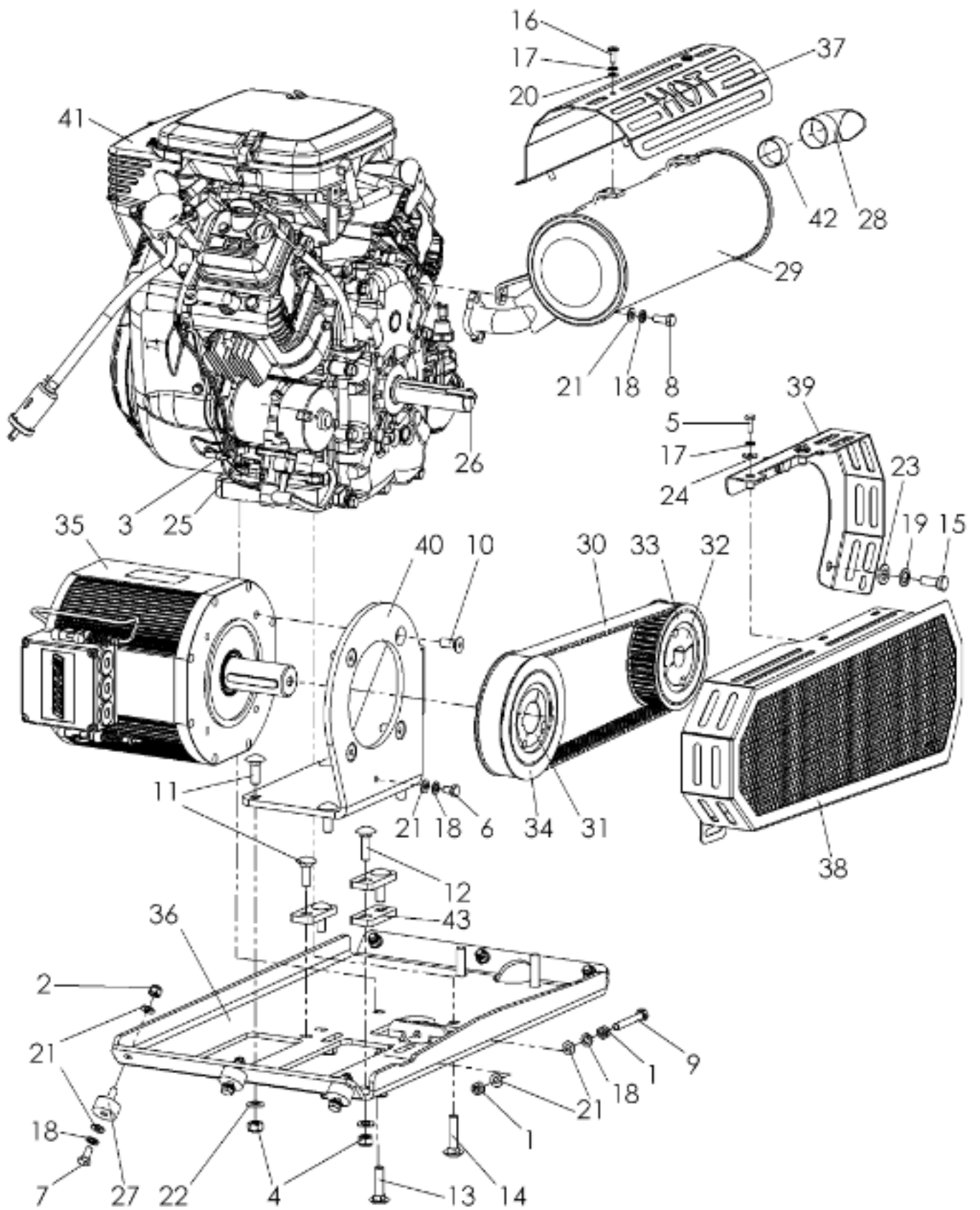
**Chassis HyCut - assembly - C11304**

No.	Item No.	no.	naming 1
1	C10519	1	chassis compl.
2	C12102	1	Deck shot rear left compl.
3	C10570	1	Deck shot front right compl.
4	C10571	1	Deck shot front left compl.
5	C10573	1	Deck shot rear right compl.
6	C12089	1	cross shaft
7	921 610 025	2	clamping element
8th	C10576	2	longitudinal strut compl.
9	C10589	1	Recording of electric cylinder chassis
10	C10689	4	pendulum plate
11	C11433	2	bumper compl.
12	C11476	1	rear apron
13	C11490	1	front apron
14	909 950 000	2	gas spring
15	C10667	2	Countersunk lock washer
16	C11562	2	spacer sleeve
17	C12085	4	LED work lights compl.
18	C11717	1	Shock absorber lifting cylinder compl.
19	936 050 003	1	electric cylinder
20	C11753	1	rec. lift cylinder bracket
21	911 008 020	3	rubber-metal buffers
22	911 008 021	1	rubber-metal buffers
23	915 252 840	4	bearings
24	915 151 710	4	bearings
25	C11510	1	Support plate control boxes
26	936 306 021	1	Remote control complete set
27	936 306 018	1	control box
28	C12533	1	rec. Main switch & distribution compl.
29	941 903 009	1	Battery main switch 2-pole
30	936 306 022	1	Wiring harness including junction box
31	C11198	1	recording fan
32	C11197	1	Perforated sheet metal fan
33	938 702 020	1	fan
34	941 902 017	2	isolation contactor
35	941 902 018	2	isolation contactor
36	C11540	1	Plus rail contactor
37	960 011 220	1	battery closed
38	960 011 235	4	battery
39	960 202 010	4	battery clamp
40	960 202 011	4	battery clamp
41	960 031 100	1	battery cover on the right
42	960 031 101	1	Battery cover on the left
43	C10770	1	tank carrier
44	C10769	1	tank tray
45	C12566	1	assembling the tank
46	918 450 025	1	Tension belt with clamp lock
47	C12027	1	carrier control compl.
48	911 004 015	2	rubber buffers
49	C12031	1	carrier receiver compl.
50	960 080 011	1	Measurement shunt /IVT-S

## Chassis HyCut - assembly - C11304

No.	Item No.	no.	naming 1
51	C12547	1	Ground rail measurement shunt
52	918 080 150	5	battery strap
53	950 900 070	1	Nameplate - Kersten
54	C12535	1	battery pad
55	C12534	1	battery pad
56	705 205 011	4	Rifle
57	908 510 028	2	cotter pin
58	907 225 020	2	split pin
59	905 104 000	2	washer
60	900 004 002	2	stop nut
61	901 905 016	4	carriage bolt
62	905 105 000	4	washer
63	900 005 002	4	stop nut
64	901 006 012	4	Hexagon screw without shank
65	901 906 016	8th	carriage bolt
66	901 006 016	1	Hexagon screw without shank
67	905 106 000	21	washer
68	901 806 020	4	Cylindrical screw with socket
69	901 006 020	4	Hexagon screw without shank
70	901 906 020	4	carriage bolt
71	903 906 020	4	Pan head screw with socket.
72	905 206 018	4	K disc
73	905 206 025	4	K disc
74	906 906 000	4	Teflon disc
75	905 006 000	13	spring washer
76	900 006 002	16	stop nut
77	901 008 016	3	Hexagon screw without shank
78	901 908 020	4	carriage bolt
79	903 908 016	2	Pan head screw with socket.
80	901 808 020	4	Cylindrical screw with socket
81	901 908 035	2	carriage bolt
82	901 008 020	20	Hexagon screw without shank
83	901 008 025	3	Hexagon screw without shank
84	901 008 030	2	Hexagon screw without shank
85	901 108 080	2	Hex head screw with shank
86	905 108 000	42	washer
87	905 208 025	14	K disc
88	905 008 000	32	spring washer
89	900 008 002	18	stop nut
90	900 008 001	6	Skt. nut
91	901 210 025	2	countersunk screw with socket
92	901 910 035	4	carriage bolt
93	905 210 000	4	K disc
94	900 010 002	4	stop nut

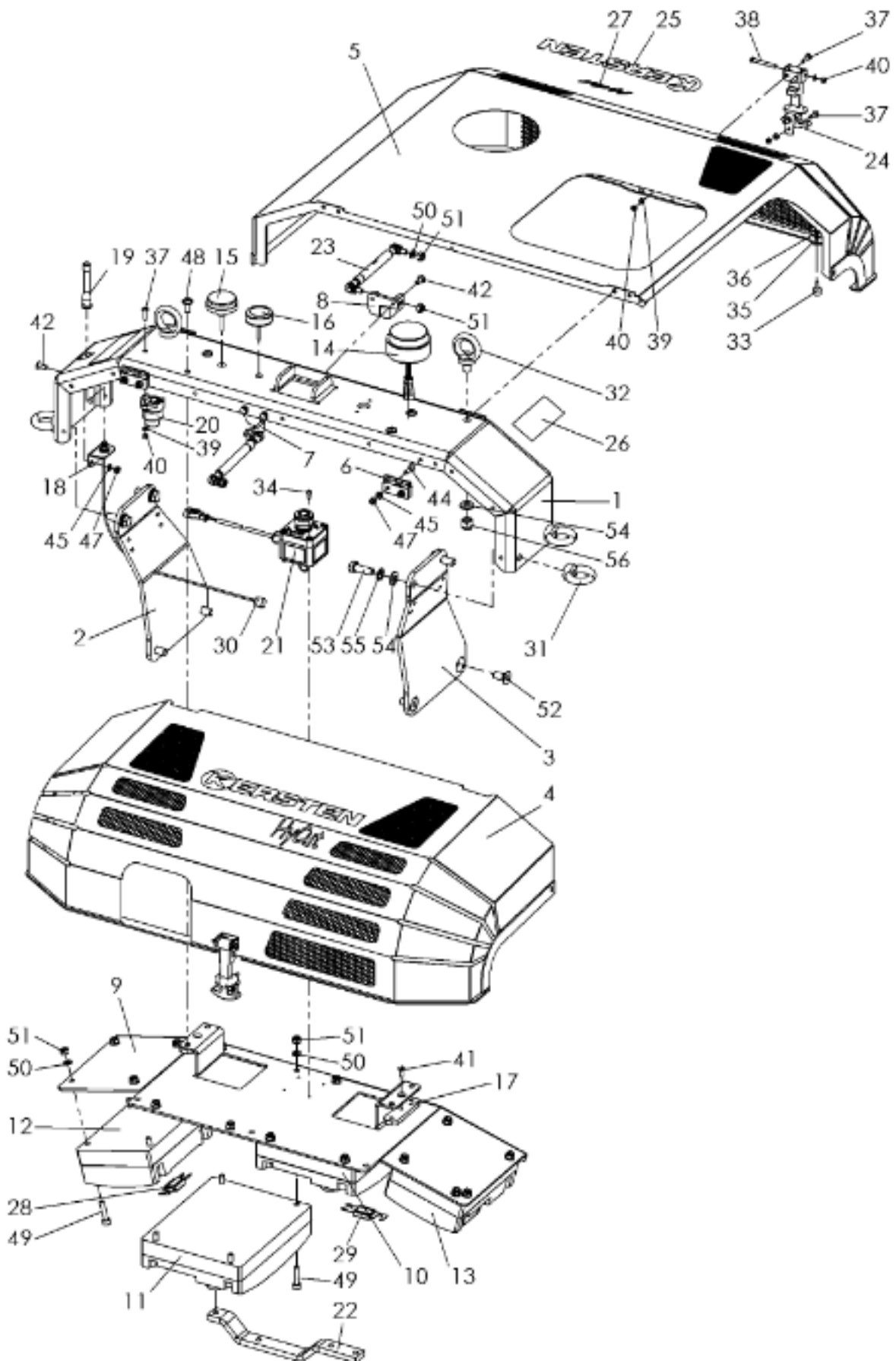
2.2 HyCut drive unit - assembly - C10521



**HyCut drive unit - reassembly - C10521**

No.	Item No.	no.	naming 1
1	900 008 001	2	Skt. nut
2	900 008 002	6	stop nut
3	900 010 001	4	Skt. nut
4	900 010 002	8th	stop nut
5	901 006 016	3	Hexagon screw without shank
6	901 008 012	1	Hexagon screw without shank
7	901 008 016	6	Hexagon screw without shank
8th	901 008 020	2	Hexagon screw without shank
9	901 108 060	1	Hexagon screw without shank
10	901 210 025	4	countersunk screw with socket
11	901 910 030	6	carriage bolt
12	901 910 035	2	carriage bolt
13	901 910 040	2	carriage bolt
14	901 910 045	2	carriage bolt
15	902 716 100	3	inch screw
16	903 906 016	4	Pan head screw with socket.
17	905 006 000	7	spring washer
18	905 008 000	10	spring washer
19	905 012 000	3	spring washer
20	905 106 000	4	washer
21	905 108 000	17	washer
22	905 110 000	8th	washer
23	905 112 000	3	washer
24	905 206 018	3	K disc
25	905 510 000	4	locking washer
26	908 635 040	1	Adjusting spring
27	911 008 021	6	rubber-metal buffers
28	920 803 073	1	exhaust deflector
29	920 995 007	1	silencer
30	921 501 120	1	timing belt
31	921 600 038	1	taper lock bushing
32	921 600 254	1	taper lock bushing
33	921 648 830	1	toothed pulley
34	921 656 830	1	toothed pulley
35	936 001 013	1	generator
36	C10496	1	vibrating plate motor
37	C11455	1	heat shield
38	C11560	1	Toothed belt protection part 2 compl.
39	C11561	1	Toothed belt protection part 1 compl.
40	C11771	1	Generator support Benevelli
41	C12156	1	Combustion engine modified
42	C12563	1	Spacer exhaust
43	C12571	3	Guide plate generator

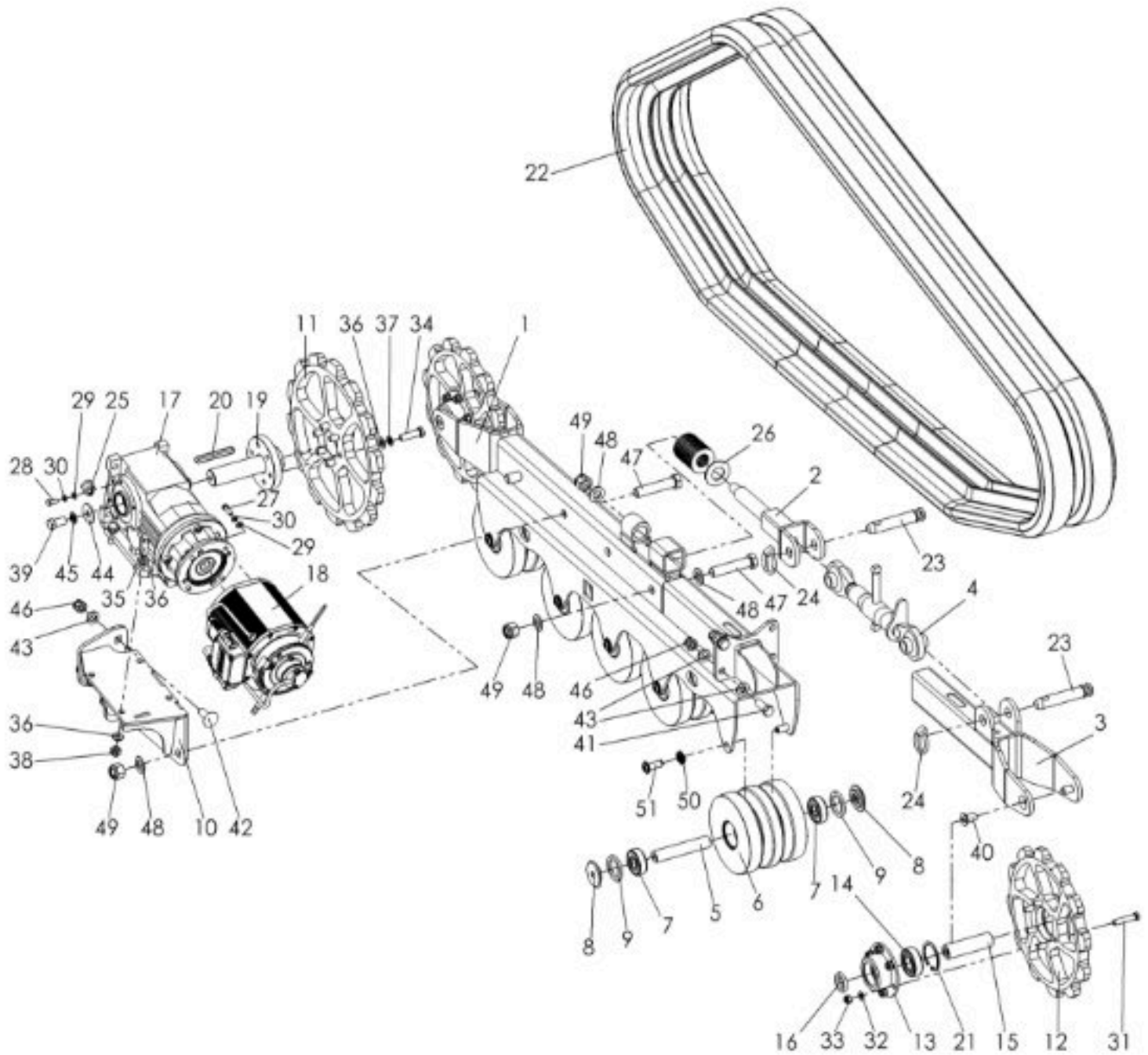
2.3 HyCut Hood - Assembly - C10957



**HyCut hood - assembly - C10957**

No.	Item No.	no.	naming 1
1	C10933	1	cross member
2	C10934	1	Side carrier left
3	C10998	1	side carrier on the right
4	C11519	1	rear hood compl.
5	C11525	1	front hood compl.
6	908 801 016	4	screw-on hinge
7	C11028	1	Rear damper mount
8th	C11029	1	Front damper mount
9	C10725	1	Cross member control units
10	936 001 608	1	Engine control unit "M8"
11	936 001 604	1	Engine control unit "M4"
12	936 001 251	1	Engine control unit "M1"
13	936 001 252	1	Engine control unit "M2"
14	C12083	1	flashing light compl.
15	960 070 101	1	GSM antenna
16	960 070 100	1	GPS antenna
17	C11454	2	threaded strip
18	C11509	1	Radio antenna holder
19	936 306 023	1	antenna
20	960 090 001	1	bugle
21	C12081	1	Emergency stop switch compl.
22	C11031	1	ground rail control modules
23	909 950 001	2	gas spring
24	907 900 001	2	hood holder compl.
25	950 900 100	2	Kersten sticker
26	950 900 090	2	Sticker security
27	950 900 003	2	sticker
28	912 700 200	2	fuse
29	912 700 425	2	fuse
30	960 080 008	1	antenna cable
31	900 012 017	4	ring nut
32	902 012 080	2	Eyebolt high-strength
33	911 004 015	4	rubber buffers
34	901 804 010	4	Cylindrical screw with socket
35	905 104 000	4	washer
36	900 004 002	4	stop nut
37	903 905 020	9	Pan head screw with socket.
38	901 105 045	2	Hex head screw with shank
39	905 105 000	13	washer
40	900 005 002	11	stop nut
41	901 206 016	1	countersunk screw with socket
42	903 906 016	4	Pan head screw with socket.
43	901 006 016	2	Hexagon screw without shank
44	901 206 020	16	countersunk screw with socket
45	905 106 000	20	washer
46	905 006 000	2	spring washer
47	900 006 002	18	stop nut
48	903 908 020	4	Pan head screw with socket.
49	901 808 035	16	Cylindrical screw with socket
50	905 108 000	19	washer
51	900 008 002	21	stop nut
52	901 212 025	4	countersunk screw with socket
53	901 012 035	4	Hexagon screw without shank
54	905 112 000	6	washer
55	905 012 000	4	spring washer
56	900 012 002	2	stop nut

2.4 Landing gear assembly



**2.4.1 Left HyCut Landing Gear - Reassembly - C11207**

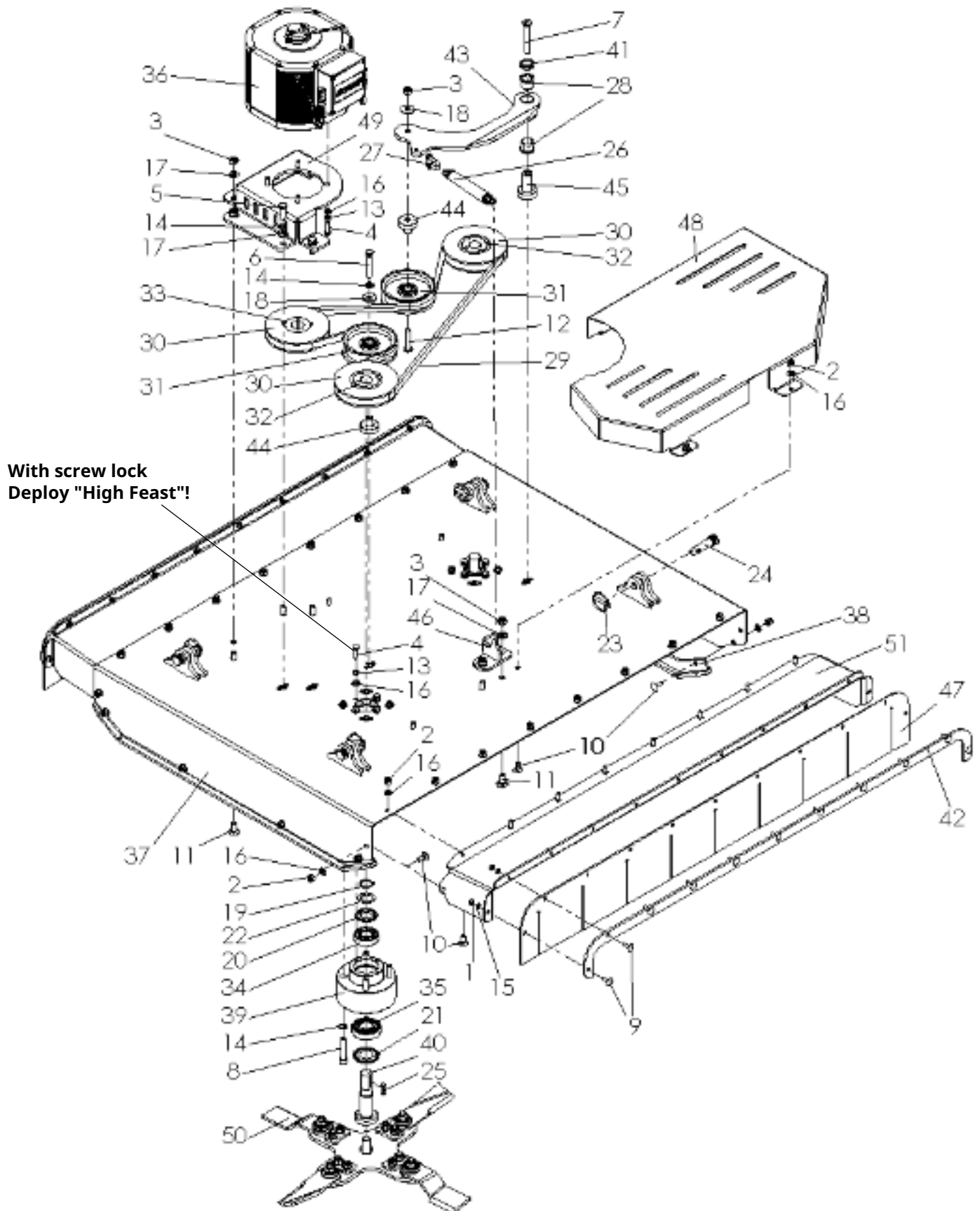
No.	Item No.	no.	naming 1
1	C12410	1	base frame compl.
2	C11943	1	chain tensioner compl.
3	C11041	1	clamping arm compl.
4	950 101 060	1	top link
5	C12455	5	wheel axle
6	C12412	5	leadership role
7	924 106 204	10	ball-bearing
8th	C11970	10	heel bushing
9	924 535 475	10	felt ring
10	C11216	1	gear carrier left complete
11	C10207	1	Drive wheel 14 teeth
12	C11046	2	Idler wheel 12 teeth
13	C11241	4	Bearing shell compl.
14	924 106 205	4	deep groove ball bearing
15	C11208	2	shaft idler wheel
16	705 025 356	4	spacer
17	922 063 358	1	Bevel spur gears
18	936 001 002	1	electric motor
19	C11990	1	Drive shaft sprocket compl.
20	908 008 780	1	Adjusting spring
21	906 000 520	4	locking ring inside
22	926 200 001	1	rubber track
23	907 400 073	2	socket pin
24	907 111 000	2	linch pin
25	908 618 015	1	Pipe clamp with rubber
26	909 502 543	16	disc spring
27	901 006 020	4	Hexagon screw without shank
28	901 006 016	1	Hexagon screw without shank
29	905 106 000	5	washer
30	905 006 000	5	spring washer
31	901 008 045	12	Hexagon screw without shank
32	905 108 000	24	washer
33	900 008 002	12	stop nut
34	901 010 040	6	Hexagon screw without shank
35	901 010 035	4	Hexagon screw without shank
36	905 110 000	14	washer
37	905 010 000	6	spring washer
38	900 010 002	4	stop nut
39	901 012 025	1	Hexagon screw without shank
40	901 212 025	4	countersunk screw with socket
41	901 012 035	2	Hexagon screw without shank
42	901 912 035	4	carriage bolt
43	905 112 000	8th	washer
44	905 212 001	1	K disc
45	905 012 000	1	spring washer
46	900 012 002	6	stop nut
47	901 116 080	3	Hex head screw with shank
48	905 116 000	7	washer
49	900 016 002	4	stop nut
50	905 510 000	10	locking washer
51	903 910 030	10	Pan head screw with socket.



2.4.2 Right Hand HyCut Landing Gear - Reassembly - C11586

No.	Item No.	no.	naming 1
1	C12410	1	base frame compl.
2	C11943	1	chain tensioner compl.
3	C11041	1	clamping arm compl.
4	950 101 060	1	top link
5	C12455	5	wheel axle
6	C10257	5	leadership role
7	924 106 204	10	ball-bearing
8th	C11970	10	heel bushing
9	924 535 475	10	felt ring
10	C11249	1	Transmission carrier right compl.
11	C10207	1	Drive wheel 14 teeth
12	C11046	2	Idler wheel 12 teeth
13	C11241	4	Bearing shell compl.
14	924 106 205	4	deep groove ball bearing
15	C11208	2	shaft idler wheel
16	705 025 356	4	spacer
17	922 063 358	1	Bevel spur gears
18	936 001 002	1	electric motor
19	C11990	1	Drive shaft sprocket compl.
20	908 008 780	1	Adjusting spring
21	906 000 520	4	locking ring inside
22	926 200 001	1	rubber track
23	907 400 073	2	socket pin
24	907 111 000	2	linch pin
25	908 618 015	1	Pipe clamp with rubber
26	909 502 543	16	disc spring
27	901 006 020	4	Hexagon screw without shank
28	901 006 016	1	Hexagon screw without shank
29	905 106 000	5	washer
30	905 006 000	5	spring washer
31	901 008 045	12	Hexagon screw without shank
32	905 108 000	24	washer
33	900 008 002	12	stop nut
34	901 010 040	6	Hexagon screw without shank
35	901 010 035	4	Hexagon screw without shank
36	905 110 000	14	washer
37	905 010 000	6	spring washer
38	900 010 002	4	stop nut
39	901 012 025	1	Hexagon screw without shank
40	901 212 025	4	countersunk screw with socket
41	901 012 035	2	Hexagon screw without shank
42	901 912 035	4	carriage bolt
43	905 112 000	8th	washer
44	905 212 001	1	K disc
45	905 012 000	1	spring washer
46	900 012 002	6	stop nut
47	901 116 080	3	Hex head screw with shank
48	905 116 000	7	washer
49	900 016 002	4	stop nut
50	905 510 000	10	locking washer
51	903 910 030	10	Pan head screw with socket.

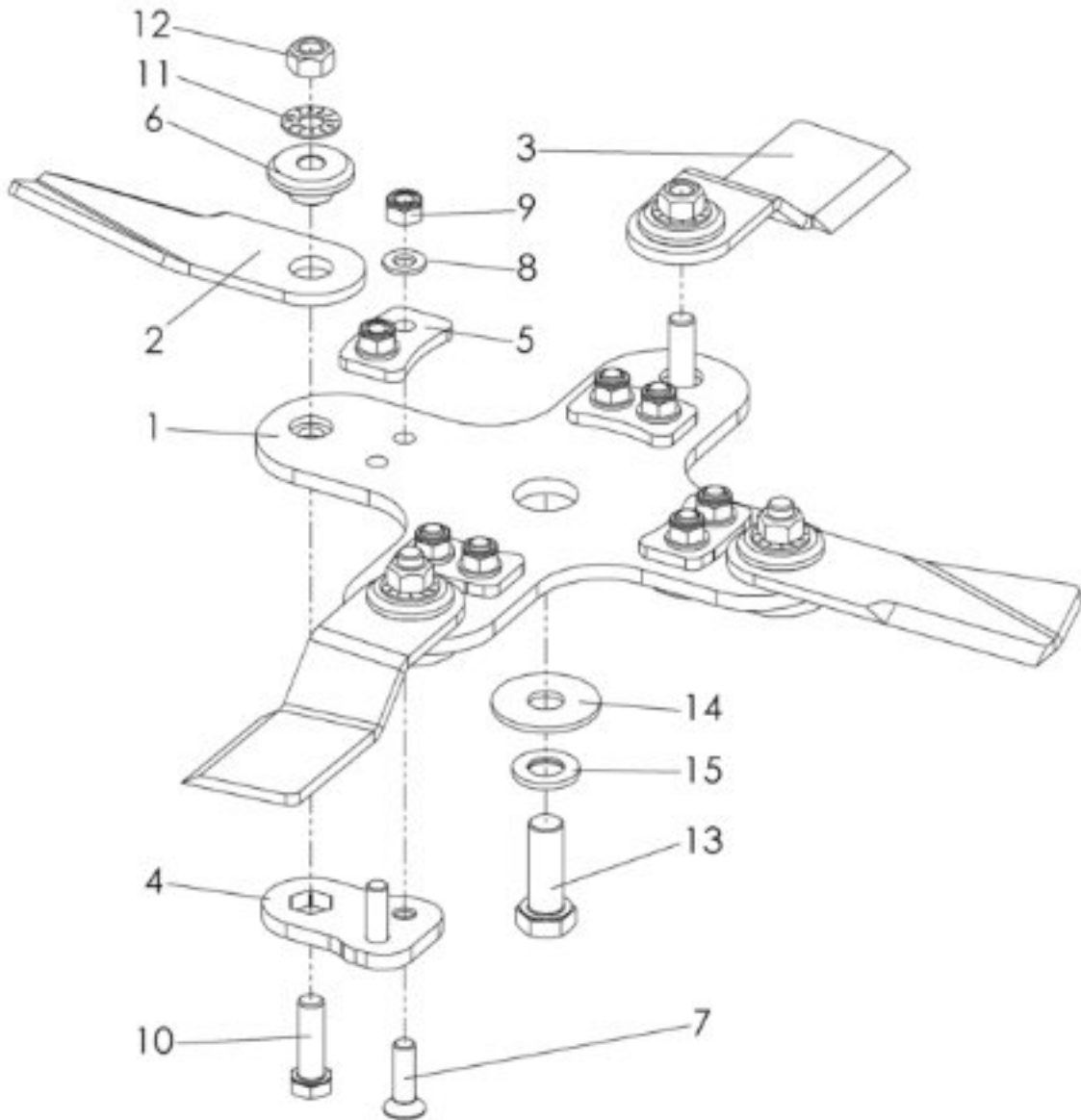
2.5 Mower Deck - Assembly - C10165



**Mower Deck - Assembly - C10165**

No.	Item No.	no.	naming 1
1	900 006 002	22	stop nut
2	900 008 002	32	stop nut
3	900 010 002	7	stop nut
4	901 008 025	12	Hexagon screw without shank
5	901 010 030	2	Hexagon screw without shank
6	901 110 060	1	Hex head screw with shank
7	901 210 080	1	countersunk screw with socket
8th	901 810 055	8th	Cylindrical screw with socket
9	901 906 020	22	carriage bolt
10	901 908 020	32	carriage bolt
11	901 910 025	6	carriage bolt
12	903 910 050	1	Pan head screw with socket.
13	905 008 000	12	spring washer
14	905 010 000	11	spring washer
15	905 106 000	22	washer
16	905 108 000	44	washer
17	905 110 000	8th	washer
18	905 210 000	2	K disc
19	905 925 000	2	circlip outside
20	906 906 205	2	NILOS ring
21	906 906 206	2	NILOS ring
22	906 916 205	2	Nilos spacer ring
23	907 108 000	4	linch pin
24	907 400 043	4	socket pin
25	908 008 725	2	Adjusting spring
26	909 200 174	1	tension spring
27	912 801 008	1	D shackle
28	915 222 521	2	bearings
29	921 106 885	1	V-belt
30	921 220 133	3	V-belt pulley
31	921 416 101	2	back idler
32	921 600 025	2	taper lock bushing
33	921 600 028	1	taper lock bushing
34	924 106 205	2	deep groove ball bearing
35	924 106 206	2	deep groove ball bearing
36	936 001 011	1	electric motor
37	C10446	1	Sickle cutting deck compl.
38	C10451	2	skid compl.
39	C10498	2	bearing block
40	C10513	2	spindle shaft
41	C10667	1	locking washer
42	C10741	2	towel clamping plate
43	C10749	1	clamping arm compl.
44	C10751	2	Shoulder bush tensioner
45	C10759	1	Heel bush clamp arm
46	C10760	1	tension spring holder
47	C10910	2	throw protection cloth
48	C11030	1	cover straps
49	C11769	1	Engine mount Benevelli
50	C11840	2	Assembling the pendulum knife disc
51	C11879	2	throwing fender

2.6 Oscillating Disc - Reassembly - C11840



No.	Item No.	no.	naming 1
1	C11319	1	knife carrier
2	C11839	2	Flail knife Hardox 400
3	C11888	2	Flail knife Hardox 400
4	C10752	4	Doubling knife carrier
5	C10753	4	Knife carrier stop
6	C11606	4	collar bushing
7	901 210 035	8th	countersunk screw with socket
8th	905 110 000	8th	washer
9	900 010 002	8th	stop nut
10	903 512 040	4	Hexagon screw without shank
11	905 512 000	4	locking washer
12	900 012 009	4	Stop nut, all metal
13	901 124 016	1	Hexagonal screw with full thread
14	905 216 000	1	K disc
15	906 900 016	1	Wedge lock washer set

## 2.7 Rubber track set



### 2.7.1 All-Round Profile - S1001

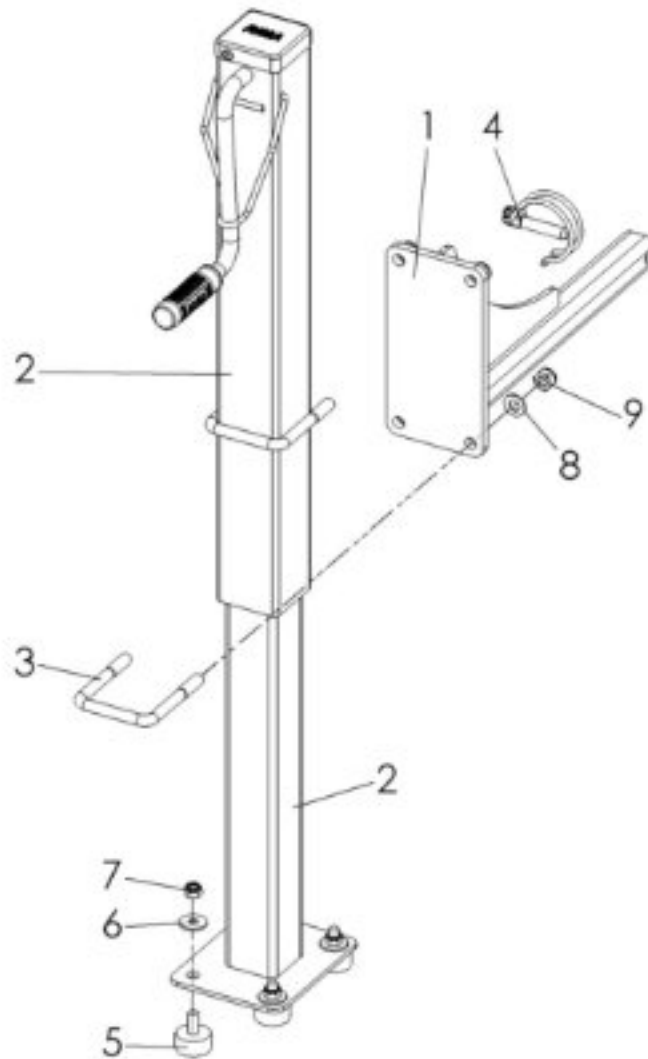
No.	Item No.	no.	naming 1
1	926 200 001	2	rubber track

### 2.7.2 Field gallery - S1002

No.	Item No.	no.	naming 1
1	926 200 002	2	rubber track

3 option

3.1 Jack - S1004



No.	Item No.	no.	namings 1
1	C12129	1	support mount
2	942 001 002	1	crank support
3	901 510 260	2	U-bolt
4	907 195 000	1	pipe linch pin
5	911 108 030	4	rubber-metal buffers
6	905 208 025	4	K disc
7	900 008 002	4	stop nut
8th	905 110 000	4	washer
9	900 010 002	4	stop nut